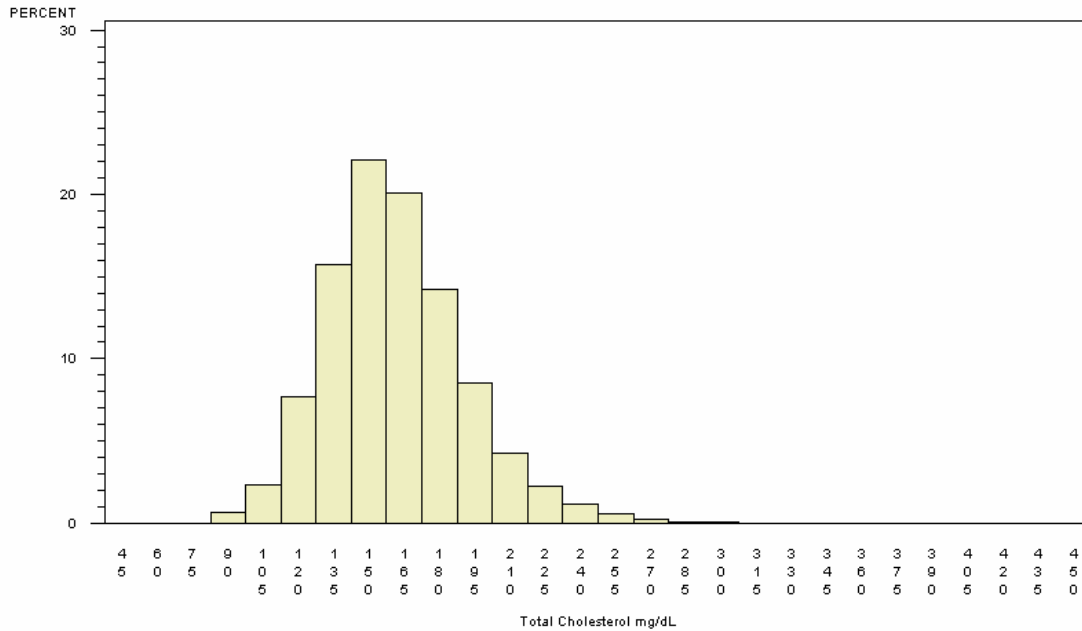


# Summary Results for Total Cholesterol for Participants 2-19 Years of Age

## SERUM TOTAL CHOLESTEROL LEVELS IN CHILDREN AGED 2-19 YEARS

PARTICIPANTS=12043, MEAN=161.57, STANDARD DEVIATION=30.19

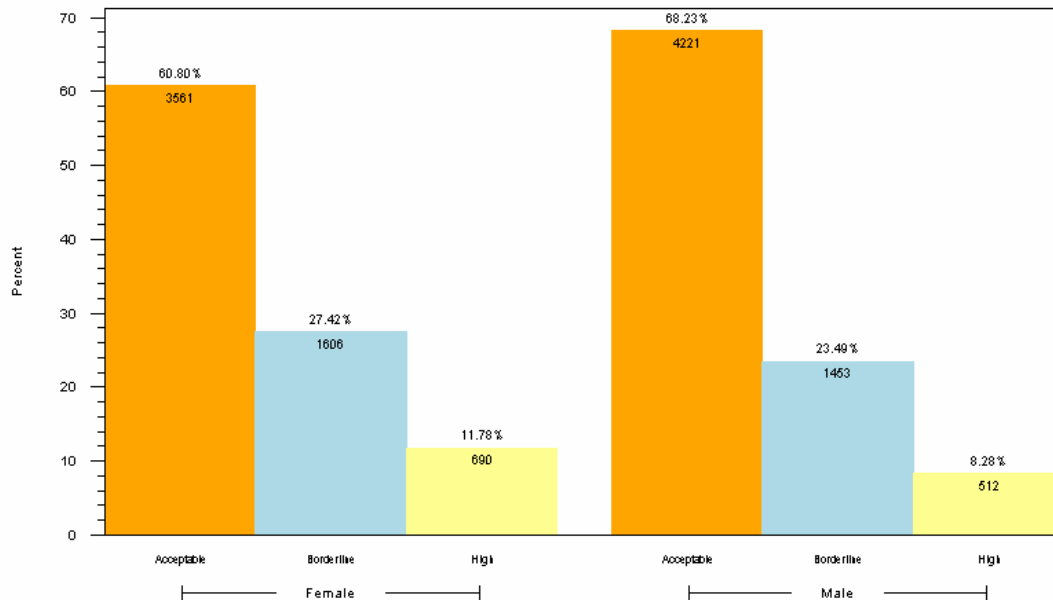
1<sup>st</sup> PERCENTILE=101.00, MEDIAN=159.00, 99<sup>th</sup> PERCENTILE=249.00



NORMAL <170 mg/dL, TAKEN FROM <http://www.americanheart.org/presenter.jhtml?identifier=4499>

## SERUM TOTAL CHOLESTEROL LEVELS IN CHILDREN AGED 2-19 YEARS

BY CHOLESTEROL CATEGORY WITHIN GENDER FOR CHILDREN (PARTICIPANTS=12043)



1. ACCEPTABLE <170, BORDERLINE 170-199, HIGH  $\geq$ 200 (UNIT: mg/dL)
2. RANGES TAKEN FROM <http://www.americanheart.org/presenter.jhtml?identifier=4499>
3. RESULTS BASED ON LAB VALUES, NOT DIAGNOSIS

### Reader's Guide to Understanding This Information:

Of participants 2-19 years of age, more than  $\frac{1}{3}$  had total cholesterol levels above the acceptable range. Total cholesterol was higher in girls compared to boys.