

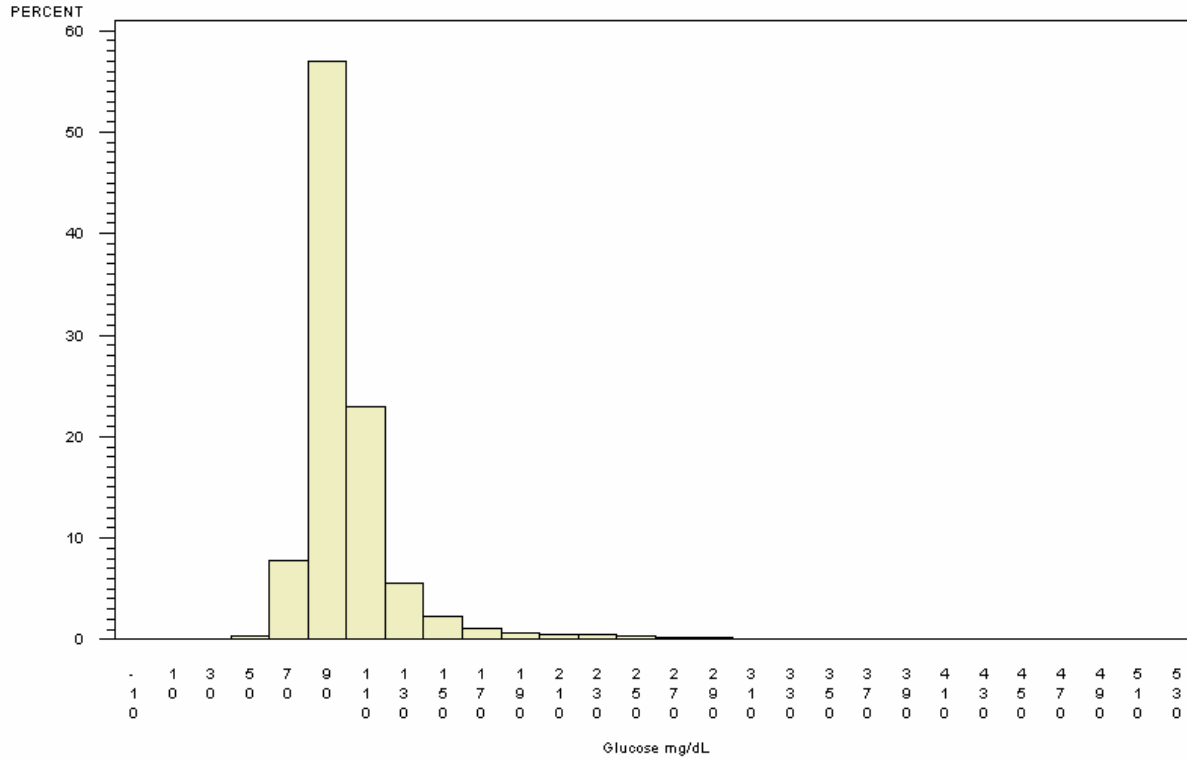
Summary Results for Serum Glucose for Participants Fasting for 4-8 Hours

SERUM GLUCOSE AFTER 4-8 HOURS OF FASTING

FOR ALL AGE GROUPS

PARTICIPANTS=14243, MEAN=102.10, STANDARD DEVIATION=34.36

1st PERCENTILE=67.00, MEDIAN=94.00, 99th PERCENTILE=264.00



Reader's Guide to Understanding This Information:

These graphs represent results for participants reporting a 4-8 hour fast prior to providing a blood sample. Due to the non-fasting status of these participants, these results are difficult to interpret with regard to diabetic status.