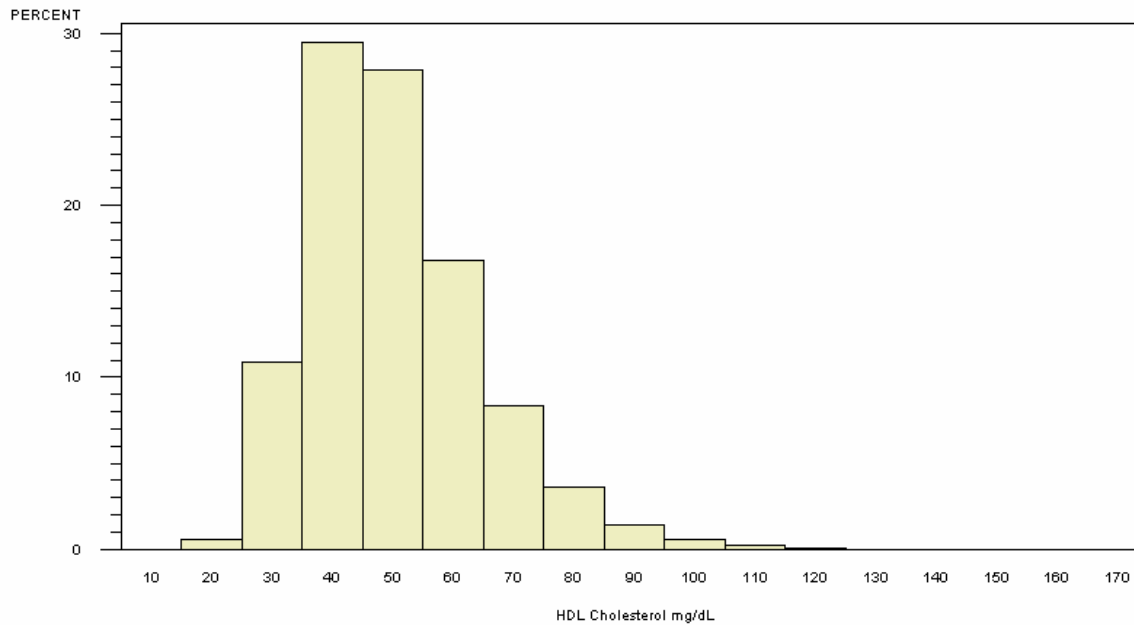


Summary Results for High Density Lipoprotein (HDL) Cholesterol for Participants ≥ 20 Years of Age

LEVELS OF HDL CHOLESTEROL IN ADULTS AGED ≥ 20 YEARS

PARTICIPANTS=54235, MEAN=49.70, STANDARD DEVIATION=14.41

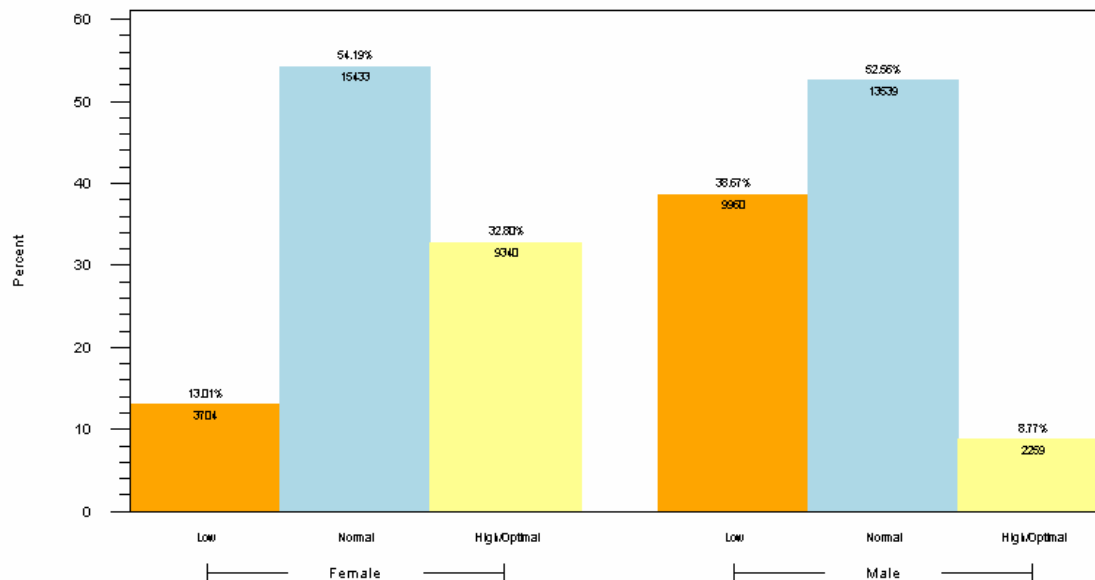
1st PERCENTILE=26.00, MEDIAN=47.00, 99th PERCENTILE=94.00



NORMAL ≥40 mg/dL, TAKEN FROM <http://www.nhlbi.nih.gov/guidelines/cholesterol/atglance.pdf>

LEVELS OF HDL CHOLESTEROL IN ADULTS AGED ≥ 20 YEARS

BY HDL CATEGORY WITHIN GENDER FOR ADULTS (PARTICIPANTS=54235)



1. LOW <40, NORMAL 40-59, HIGH/OPTIMAL ≥60 (UNIT: mg/dL)
2. RANGES TAKEN FROM <http://www.nhlbi.nih.gov/guidelines/cholesterol/atglance.pdf>
3. RESULTS BASED ON LAB VALUES, NOT DIAGNOSIS

Reader's Guide to Understanding This Information:

Higher values of HDL cholesterol have been shown to be protective against the development of cardiovascular disease. Of adult participants, 10% of women but more more than 1/3 of men had HDL levels below the desired 40 mg/dL.